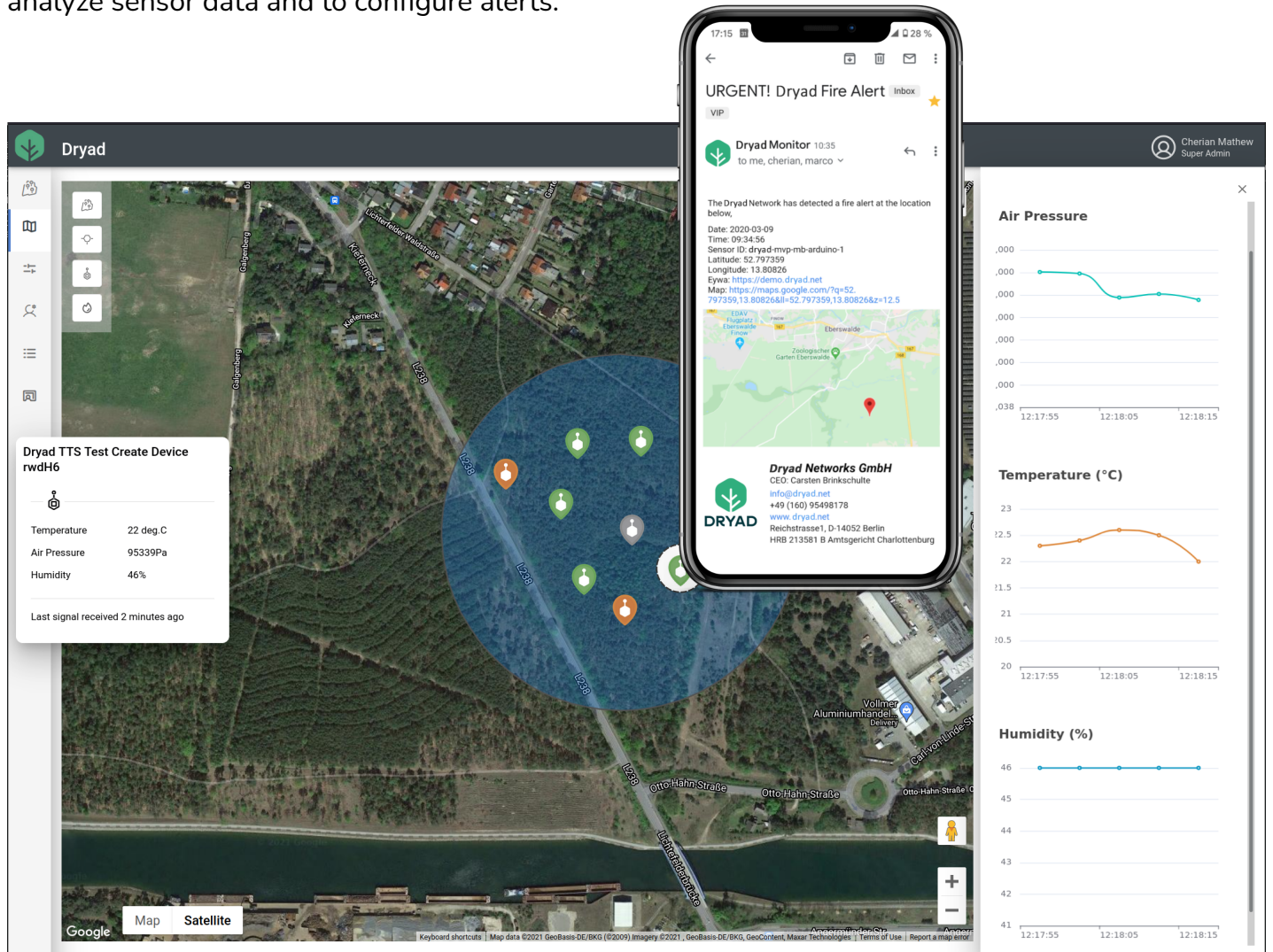


Silvanet Cloud Platform

Monitoring platform for device management, monitoring and alerting

The Silvanet Cloud captures data served by the Silvanet Mesh Network and received from the Silvanet Sensor devices. It provides a web application for end-users of the Silvanet System, enabling them to manage and view the sensors and gateways of their deployment, to view and analyze sensor data and to configure alerts.

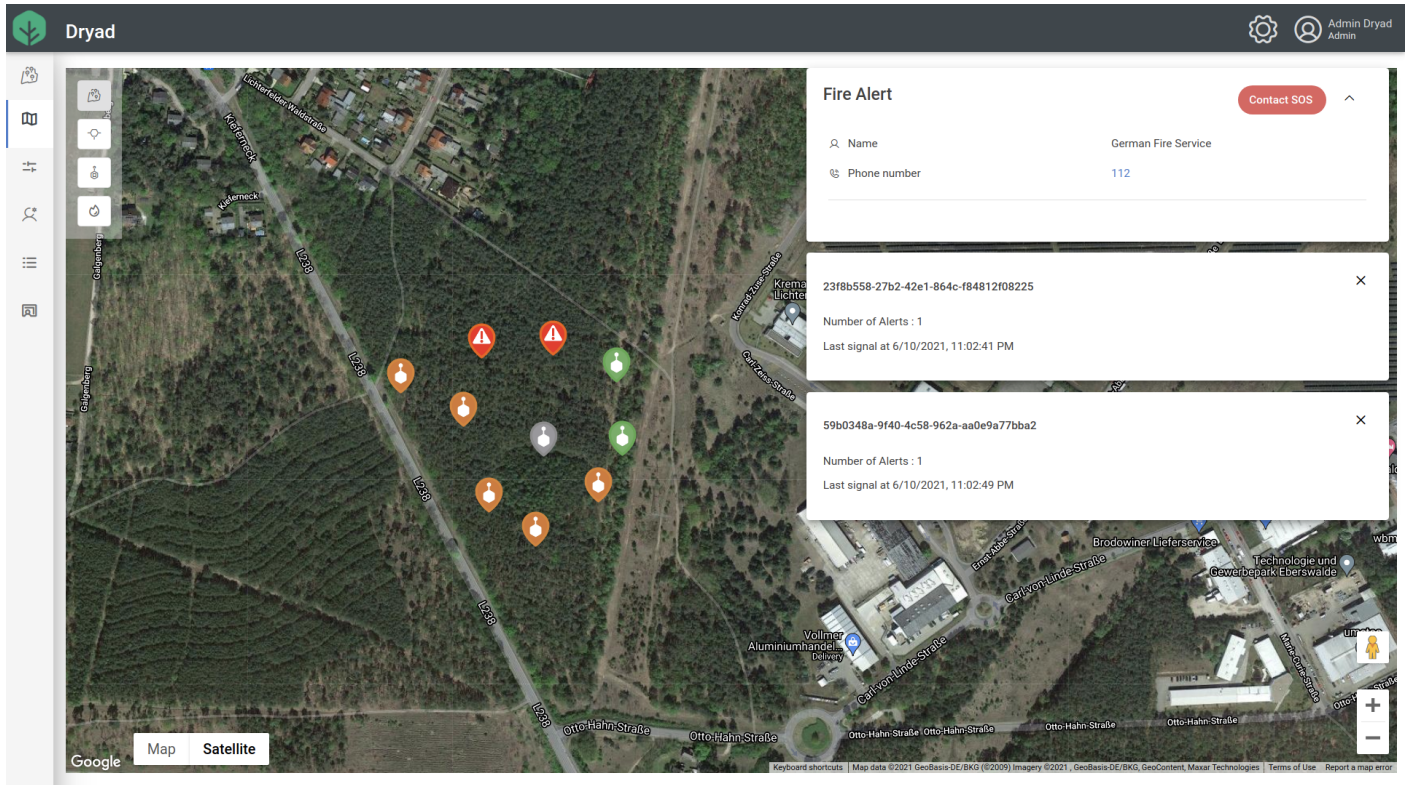


The user interface of the Silvanet web application builds on the concept of a *Site*, which groups together sensor devices and gateways within a geographical area or with similar characteristics. Details related to each sensor (in particular the fire alert status) are available along with the possibility to locate each sensor on a map. A map interface allows the user to locate all the gateways and sensor devices on a map along with their individual fire alert status.

Silvanet Cloud Platform

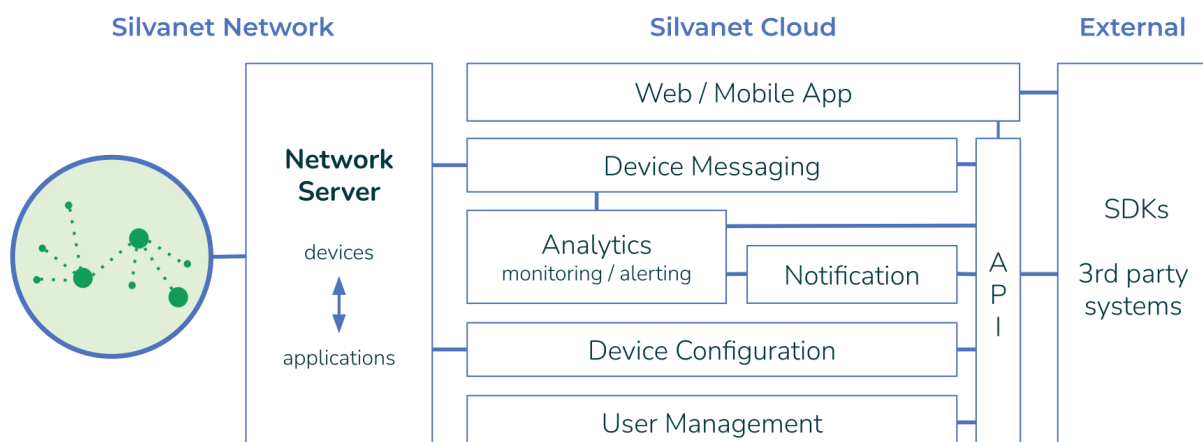
Monitoring platform for device management, monitoring and alerting

Fire Alert Web User interface



The fire alert is clearly shown on the cloud platform highlighting the interested sensors and their position on the map but also an SMS and an e-mail notification are sent to end users.

Cloud and Analytics Architecture



Scalable architecture, Cloud-based (Amazon Web Services, AWS), can be integrated with 3rd party systems with API (e.g. command & control systems for handling alerts).